



Illusion

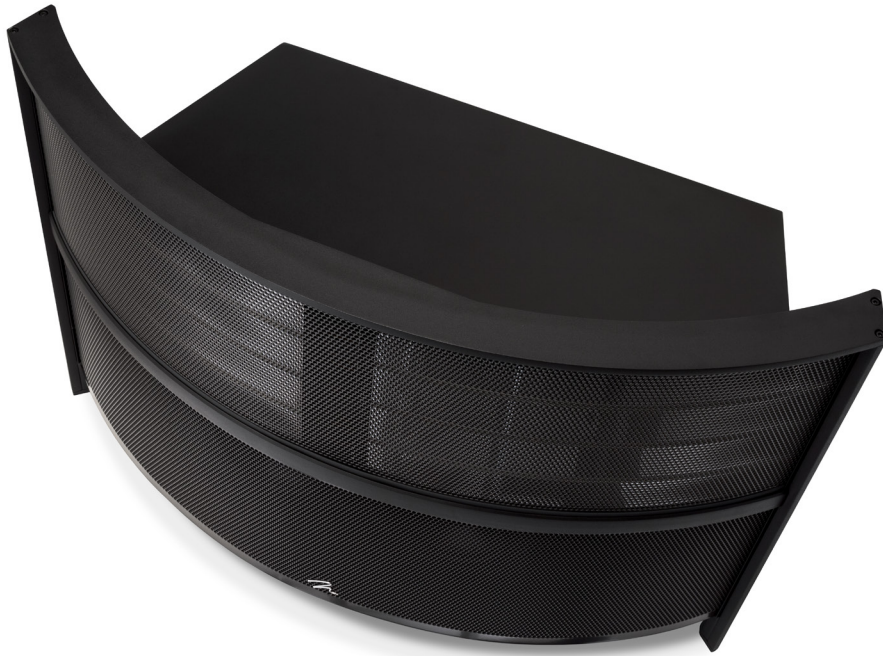
ESL C34A

A MASTERFUL CINEMATIC EXPERIENCE. There are no illusions about the performance of the Illusion ESL C34A. A center channel speaker is the most important speaker in a multi-channel audio system, tasked with reproducing the most important audio information for imaging and realism: cinematic dialogue, anchoring effects, and a large portion of the front stage speaker information. This ultimate performance floorstanding center channel loudspeaker blurs the lines between performance and reality by combining the dynamics of a 34-inch wide XStat CLS electrostatic transducer with the detailed imaging capability of MartinLogan's exclusive Folded Motion XT tweeters. Four laser-engineered 6.5-inch woofers, driven by 250 watts of clean amplification with on-board Anthem Room Correction (ARC™) Technology, anchor the image to your screen and deliver big cinema impact. New technology joined with proven innovation produces a center channel loudspeaker unlike any other.

QUICK SPECS:

- 34.5" x 8" XStat™ CLS™ Transducer
- Dual Folded Motion XT Tweeters
- 45–23,000 Hz ±3dB Frequency Response
- Four 6.5-inch PoweredForce Forward™ Woofers with 250W Amplifier
- 24-bit Vojtko™ DSP Engine
- Anthem Room Correction (ARC™) ready





System Frequency Response

45–23,000 Hz \pm 3db

Recommended Amplifier Power

50–600 watts per channel

Dispersion

Horizontal: 30 degrees

Sensitivity

90 dB/2.83 volts/meter

Impedance

Nominal 6 ohms

Crossover Frequency

500, 2,000 Hz

High Frequency Driver

Two 1.25 x 2.4-inch (3.2cm x 6.1cm) Folded Motion Transducer with 4.5 x 2.75-inch (11.4cm x 7cm) diaphragm.

Mid Frequency Driver

34.5 x 8-inch (87.6cm x 20.3cm) CLS XStat electrostatic with two 16 x 8-inch (40.6 cm x 20.3 cm) playable areas (256 in²/1,652 cm²)

Woofers

Four 6.5-inch (16.5cm) cast basket, high excursion, rigid aluminum cone with extended throw driver assembly, non-resonance asymmetrical chamber format.

Amplifier

1 x 250 watts/channel (4 ohms), 500 watts peak

Room Correction (Woofer System)

Anthem Room Correction™ (ARC™) Ready (sold separately)

Components

Custom-wound audio transformer, air core coils, Polypropylene capacitors. 24bit DSP based preamplifier (used with woofer amplifier).

Controls

Bass: \pm 10dB under 75Hz
 Mid-Bass: -2dB, 0dB, +2dB
 ARC Room EQ: On, Off

Signal Inputs

WBT-0703Cu nextgen™ 5-way binding posts feature a filigree signal conductor made from gold plated, nickel free, non-ferromagnetic, pure copper for high conductivity and fully insulated. Free from eddy current effects.

Inputs

AC Power, RJ45 (For ARC), mini USB (For ARC™)

Power Draw

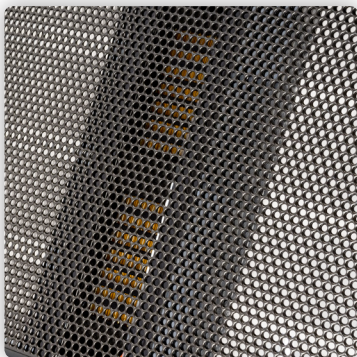
Max: 300W per channel
 Standby: <1W per channel

Weight

90 lbs. each (40.9 kg)

Size (H x W x D)

23.75 x 32.35 x 23.1-inch (60.3 x 82.2 x 58.6 cm)



Finish Options:



Premium Finish Options:



Specifications are subject to change without notice.